



CLEMEX
Pixel-Perfect Analysis

Automated dry powder slide preparation



CLEMEX Powder Dispenser

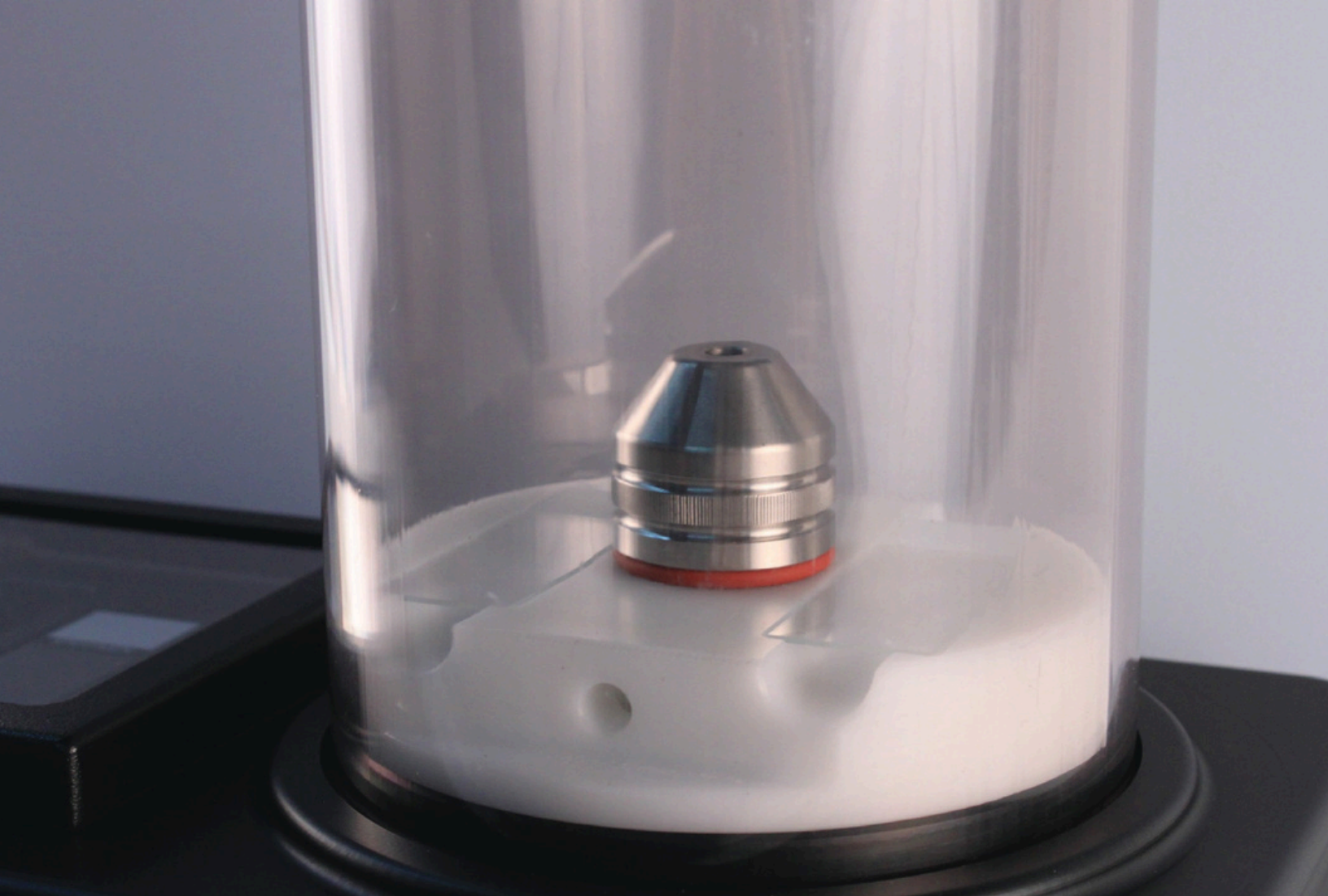
No more agglomeration of dry powder

No damaged or broken particles

The Clemex Powder Dispenser uses vacuum, insuring that no particle is damaged or changed by the disperser's environment.

Ensures reliable results

The computer controlled unit ensures perfect dispersion. Analysis is then made easy and repeatable.



Key Features

Computer controlled

Clemex Powder Dispenser is controlled by software. The user can modify the starting pressure, the dispersion flow and dispersion time. The software also has pre-defined settings for various particle types.

Vacuum system

While most dispersers use fluidized beds or high-pressure aerosol, Clemex Powder Dispenser uses vacuum, thus avoiding surrounding contamination.

Perfect dispersion

With one click, the unit scatters powder inside its vacuum tube. The particles slowly fall onto the glass slides positioned on each side of the dispersal nozzle, ensuring that the particles are not clustered.

Easy cleaning

Clemex Powder Dispenser comes with cleaning accessories specifically chosen for their anti-static properties. The glass tube is easily removed and can be quickly cleaned using a dry cloth.

The system comprises hardware and software

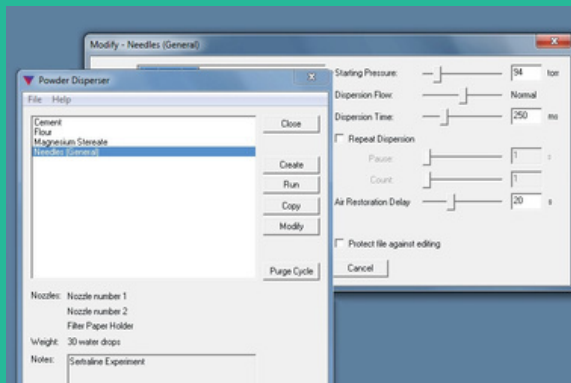
ClemexPowder Disperser unit comes with Clemex software which controls the starting pressure, dispersion flow and dispersion time. Three nozzles are included to cater for small and large particles.



Clemex
Powder
Disperser Unit



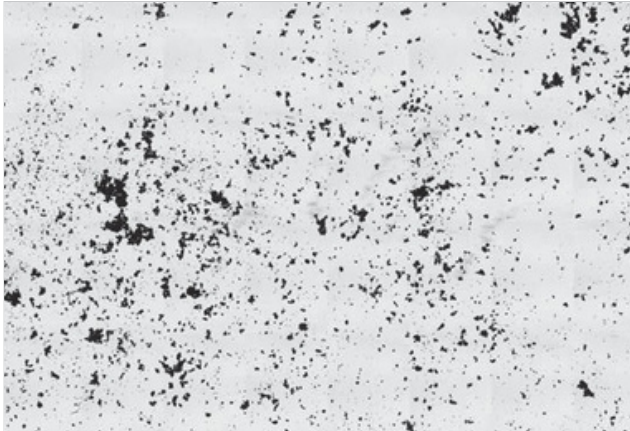
3 nozzles and 1
disperser head



Clemex software

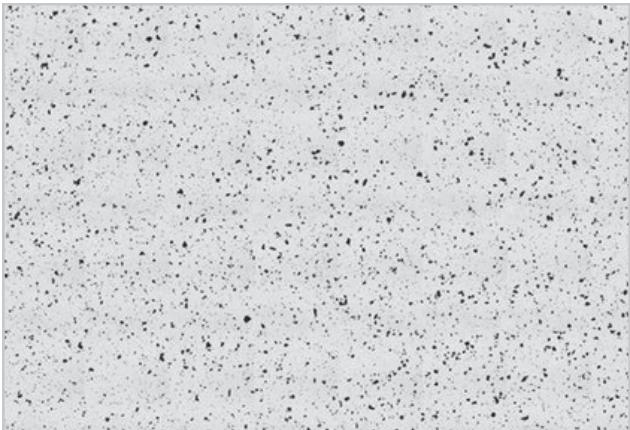
Automated dry powder slide preparation

Clemex Powder Disperser is a dry, free-flowing powder disperser used to “uncluster” particles so that they might be easily observed and measured on glass slides for image analysis by optical microscopy.



Clustered particles

Dry powder particles have a tendency to cluster when manually placed on a glass slide. This may skew image analysis results as clusters are detected as large particles.



Dispersed particles

With the unique powder dispersion method developed by Clemex, particles are scattered evenly. Image analysis results are therefore reliable and accurate.



9935 rue de Châteauneuf, Suite 130
Brossard, Quebec
J4Z 3V4, Canada



info@clemex.com



www.clemex.com



1 888 651-6573