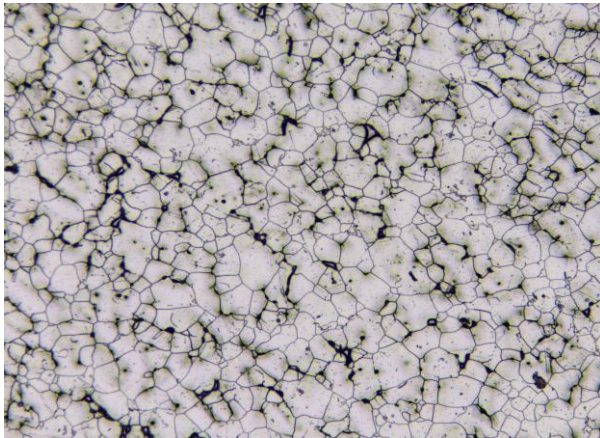


**Date:** 2026-mai-22, 13:57:01 GMT-04:00  
**Company:** Clemex  
**User:** Clemex

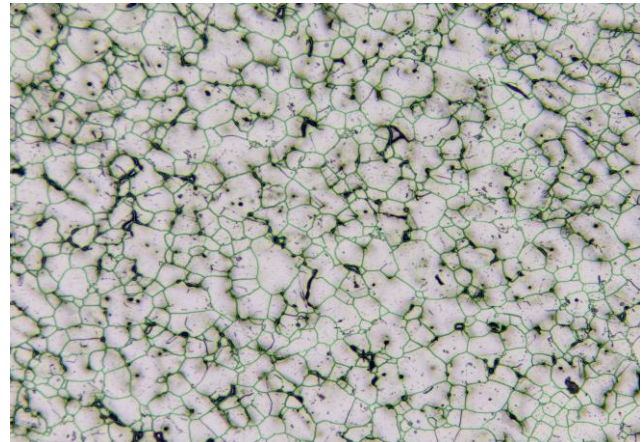
**Calibration:** 0,4922  $\mu\text{m}/\text{pixel}$   
**Units:** Microns  
**Field count:** 1

**Sample ID:** Austenite microstructures in steel  
**Magnification:** 50x

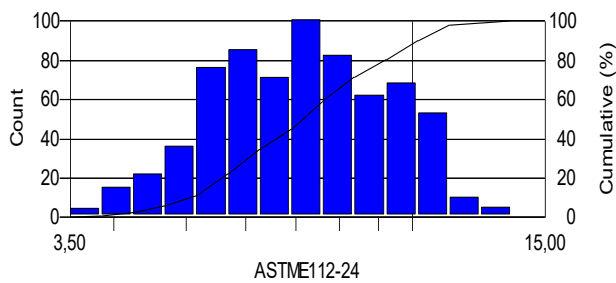
**Field area ( $\mu\text{m}^2$ ):** 1227289,54  
**Tot. area ( $\mu\text{m}^2$ ):** 1227289,54



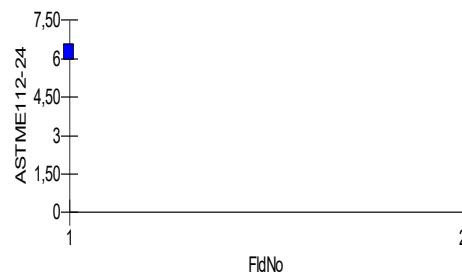
**Figure 1: Typical field of view.**



**Figure 2: Segmented typical field of view.**



**Figure 3: Grain size number distribution (ASTM E112).**



**Figure 4: Grain size no. evolution from field to field.**

## Results

**Grain Size Rating:** 6,34  
**Minimum Grain Size:** 3,46  
**Maximum Grain Size:** 12,89  
**Grain count:** 689

## Statistics

**95% CI:** 0,14  
**Relative Accuracy (%):** 1,96  
**D10:** 5,06  
**D50:** 7,13  
**D90:** 10,17