

GRAIN SIZE ANALYSIS OF ANODIZED ALUMINUM MICROSTRUCTURES

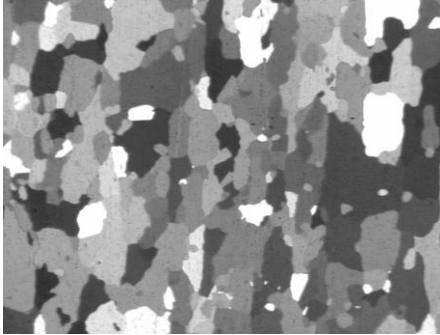


Figure 1: Original image.

Sample Description

One sample of anodized aluminum.

Purpose of Analysis

Demonstrate the ability of **Clemex Vision CORE image analysis system** to detect, separate and measure grains using **grain size module**.

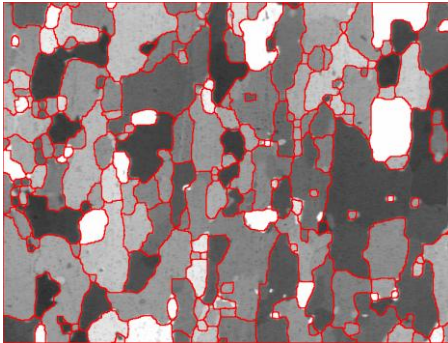


Figure 3: Grain network detection(Watershed). Artifacts were removed prior to measurements (Chord Size).

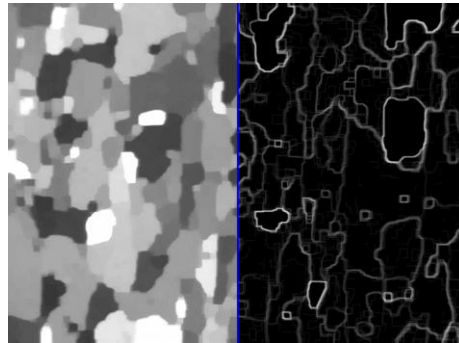


Figure 2: a) Gray levels were spread removing internal dots (Gray Closing and Opening). b) A Gray Transformation allowed the system to isolate the grain network (Gray Gradient).

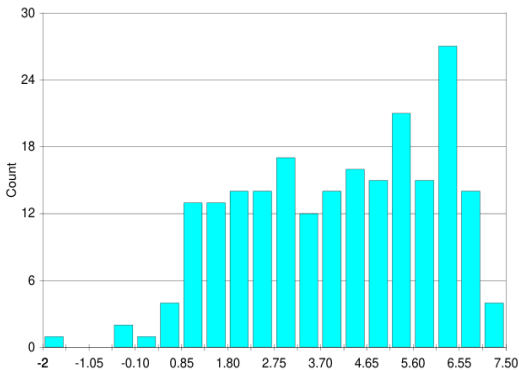


Figure 4: ASTM E 112 distribution.

Results Summary

	ASTM E 112
Rating #	3.38